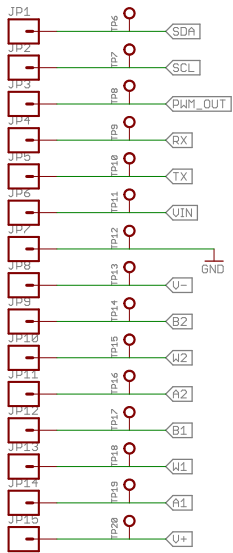
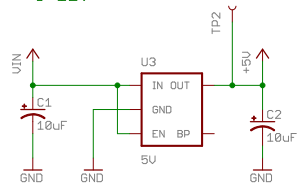


IO Connections

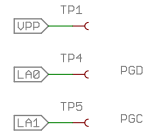


Through Hole SMD Pads

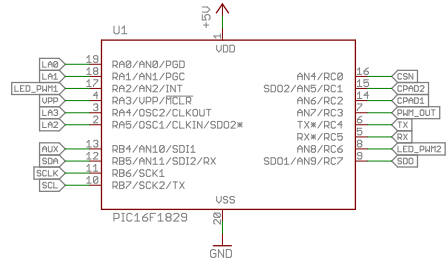
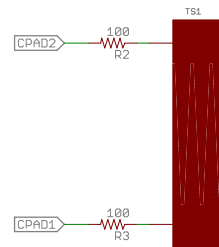
Vin = 5-12V



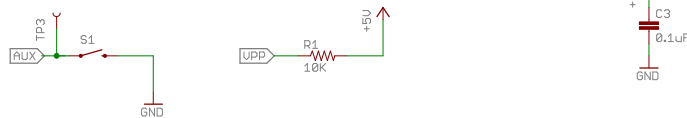
ICSP



Capacitive Sense Pad

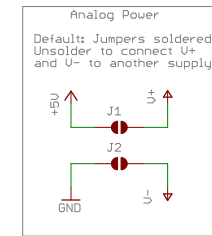


3 presses - Set I2C Address
4 presses - Start Cal procedure

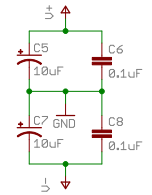


DEFAULT I2C ADDRESS: 0x08

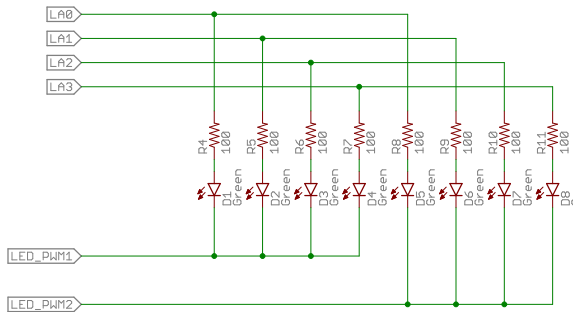
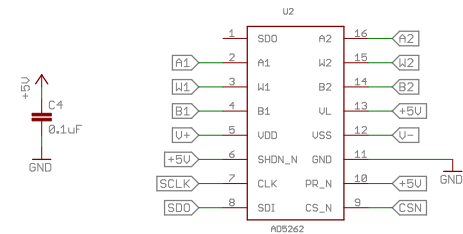
There are 64 available I2C addresses. See the Changing I2C Address section of the User Guide, for more info.



Analog IC



Digital Potentiometer Supply
Single-ended (U- connected to GND): Min = 4.5V, Max = 16.5V
Dual-ended: Min = +/-4.5V, Max = +/-5.5V
For more info, see the Electrical Specifications section of the User Guide
The maximum voltage potential between U- and U+ is 15 volts. U- maximum is -5V, U+ maximum is 15V.
For more info, see the Analog IO section of the User Guide



Released under the Creative Commons Attribution Share-Alike 4.0 License
<https://creativecommons.org/licenses/by-sa/4.0/>

TITLE: touch_pot_v13

Design by: danjuliodesigns, LLC
Joel Bartlett

REV: U13

Date: 10/22/2015 1:19 PM

Sheet: 1/1